

Halewood Partnership Area Dashboard

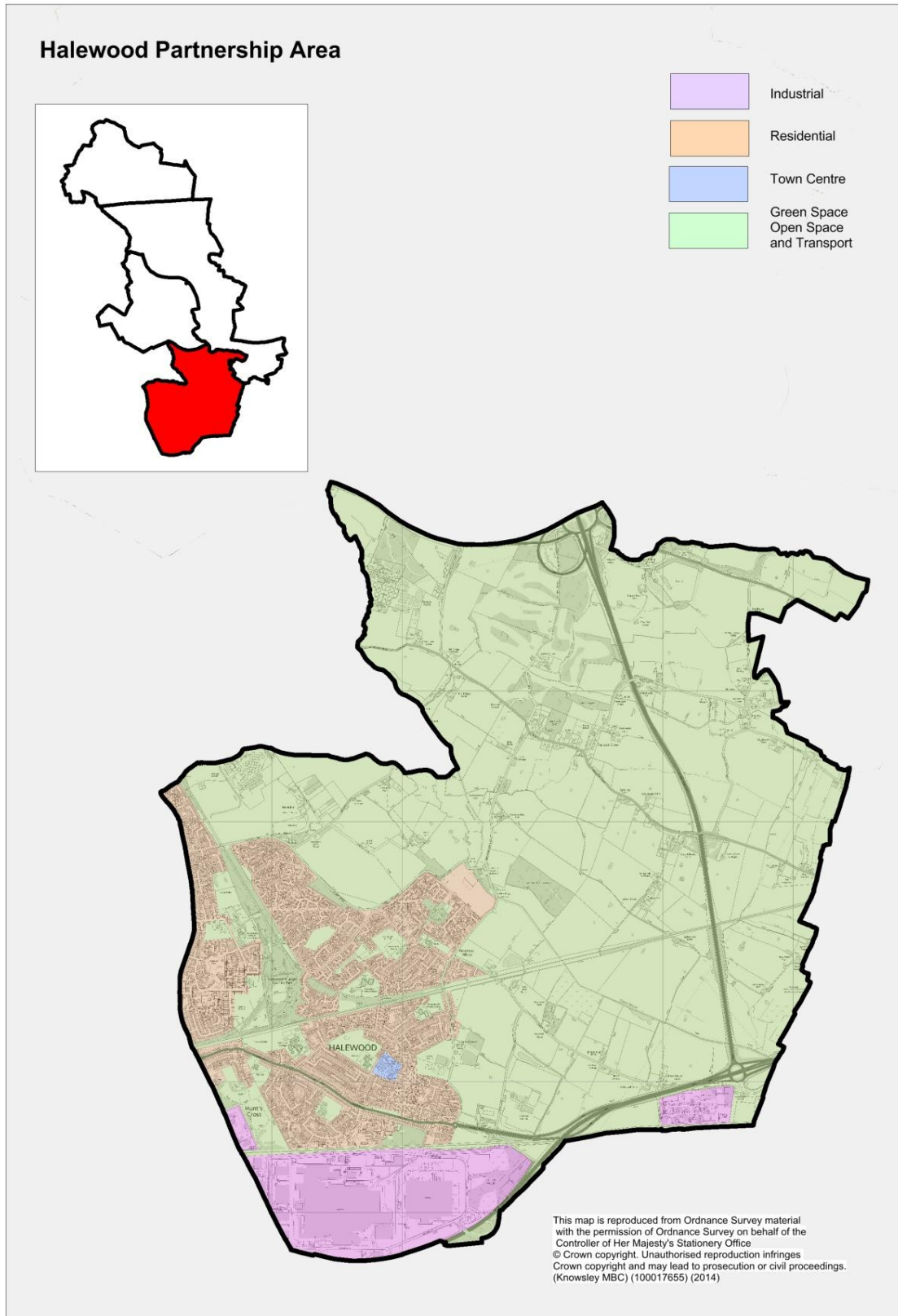
2014

This report has been produced by Policy Impact and Intelligence, Knowsley Council.

Contact: ian.burkinshaw@knowsley.gov.uk (0151 443 3067)

Halewood Partnership Area

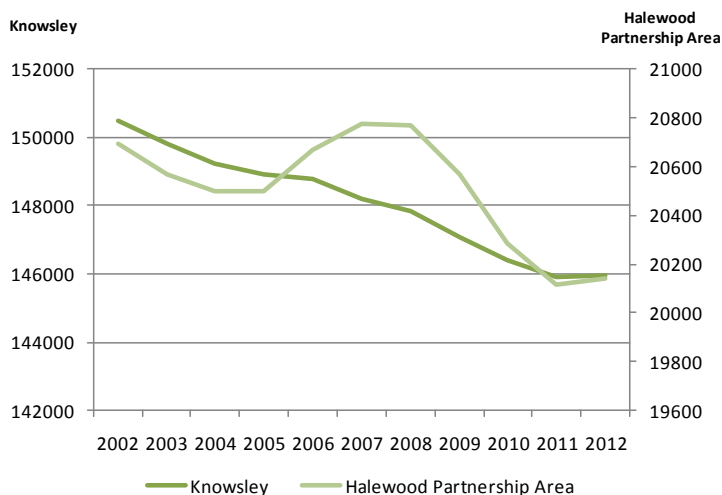
Location Map



Resident Population

Latest available population figures at Ward level are the 2012 mid-year estimates.

The Partnership Area has a population of 20,139, living in approximately 8,913 households.

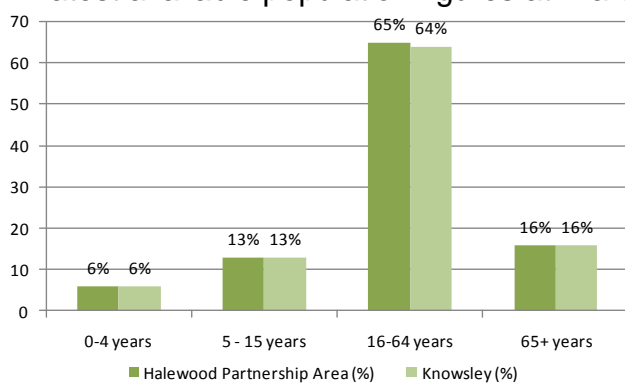


Since 2007, the Partnership Area's population has decreased by 3.2%, from 20,773 to 20,117. However prior to this, (between 2002 & 2007), the population had been fluctuating.

This is in contrast to the overall Borough trend.

Age of Residents

Latest available population figures at Ward level are the 2012 mid-year estimates.



Compared with the Borough, the Partnership Area has the same proportions of its population within the 0-4, 5-15 & 65+ aged bands and a similar proportion of residents aged 16-64 years.

| Age Band | Halewood Partnership Area (No.) | | % Change | Knowsley (No.) | | % Change |
|----------|---------------------------------|--------|----------|----------------|--------|----------|
| | 2012 | 2002 | | 2012 | 2002 | |
| 0-4 | 1,182 | 1,310 | -9.8 | 9,305 | 9,063 | 2.7 |
| 5-15 | 2,658 | 3,379 | -21.3 | 19,178 | 24,427 | -21.5 |
| 16-64 | 13,174 | 13,093 | 0.6 | 93,781 | 94,383 | -0.6 |
| 65+ | 3,125 | 2,913 | 7.3 | 23,672 | 22,633 | 4.6 |

The proportion of residents aged between 0-4 and 5-15 has decreased since 2002, the proportion of residents aged between 16-64 and 65+ has increased. This is at variance with the Borough.

Note: Numbers in red indicate a reduction.

Health of Residents

| Life Expectancy | Halewood Partnership Area | | Knowsley | |
|---------------------------------|---------------------------|-------------|-------------|-------------|
| | 2008 - 2012 | 2003 - 2007 | 2008 - 2012 | 2003 - 2007 |
| Male Life Expectancy at Birth | 77.6 | 76.1 | 76.6 | 75.7 |
| Female Life Expectancy at Birth | 81.7 | 79.0 | 80.7 | 78.6 |

Between 2003-07 and 2008-12, male and female life expectancy at birth in Halewood Partnership Area increased by 1.5 years and 2.7 years respectively and both are higher than that of the Borough.

| Key Mortality Indicators (Mortality rate per 100,000) | Halewood Partnership Area | | Knowsley | |
|--|---------------------------|------------|-------------|------------|
| | 2010 - 2012 | 2007 -2009 | 2010 - 2012 | 2007 -2009 |
| All Age Mortality Rate - All Cause | 610.5 | 665.7 | 648.4 | 706.9 |
| All Age Mortality Rate - Cardiovascular | 151.4 | 173.8 | 159.3 | 159.3 |
| All Age Mortality Rate - Cancer | 198.8 | 224.6 | 206.5 | 216.4 |

Between 2007-09 & 2010-12, each mortality rates decreased. This is at variance with the Borough, where the Cardiovascular mortality has stabilised

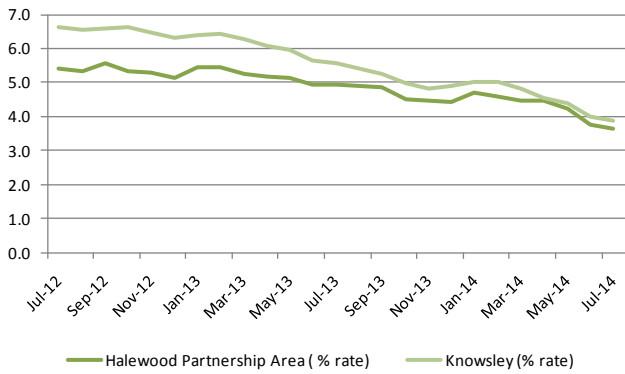
Note: Numbers in red indicate a reduction.

Employment

| All People | Halewood Partnership Area (%) | Knowsley (%) | England & Wales (%) |
|---------------------------------|-------------------------------|--------------|---------------------|
| Economically active (of which): | 70.4 | 65.6 | 69.7 |
| In employment | 61.4 | 56 | 61.9 |
| Employees | 54.8 | 50.2 | 52.2 |
| Self employed | 7.2 | 5.9 | 9.7 |
| Unemployed | 6.3 | 6.5 | 4.4 |

Although the Partnership Area has higher % proportions of Economically Active people than the Borough, (including those in Employment, Employees & Self-Employed), the proportion of its Unemployed residents is also lower than the Borough as a whole.

Residents claiming Job Seekers Allowance

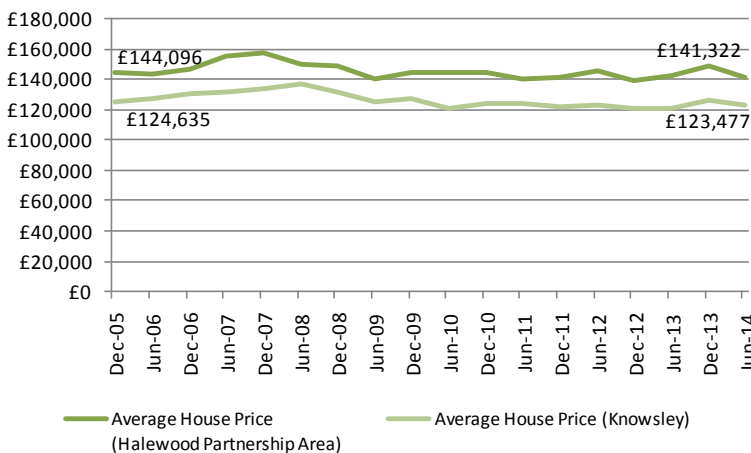


The Partnership Area has 481 JSA claimants within a working age population of 13,174. This equates to a claimant rate of 3.7%.

Trend: The ward saw a 1.9% point decrease in the proportion of its working age population claiming JSA, between Sept 2012 & July 2014. This is less than Knowsley, which saw a 2.7% point decrease over the same period.

Gap: There is currently a 0.2% gap between the Ward's current JSA claimant rate and that of Knowsley's. Closing the gap would require Knowsley to have 33 fewer claimants.

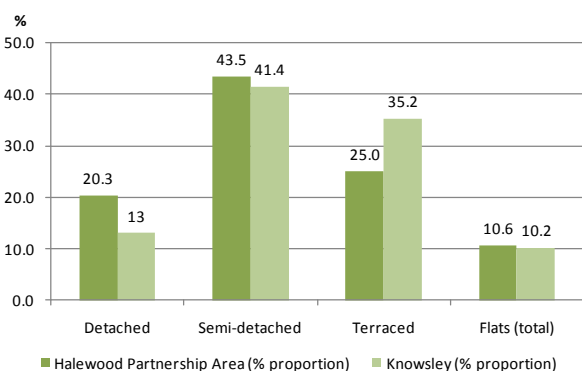
House Prices



Trend: Since the end of the 3 year historic downturn in June 2012, the Partnership Area has experienced a 2.7% decrease in average house prices.

Gap: The Partnership Area's current average house price is 14.5% greater than that of the Borough. This equates to a price differential of £17,845.

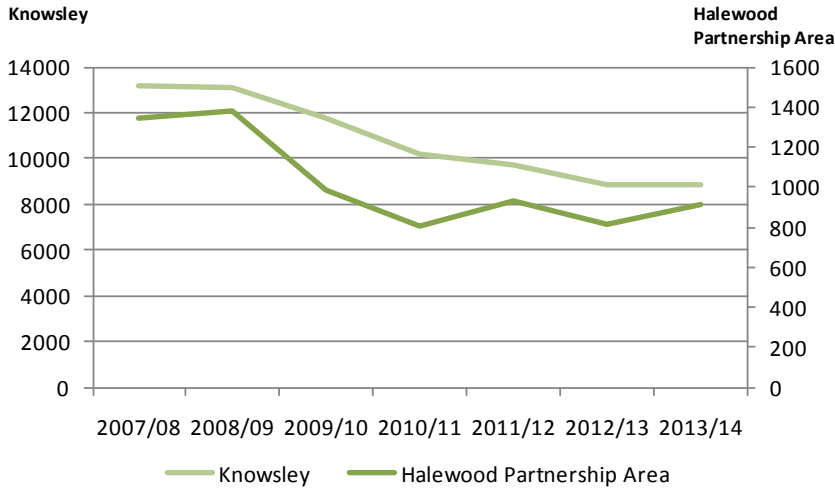
House Types



The majority of the housing stock is semi-detached, followed by terraced, with flats comprising 10.6% of the total housing stock.

This is similar to Knowsley Borough, where the majority of housing stock is semi-detached, followed by terraced housing, with flats comprising 10%.

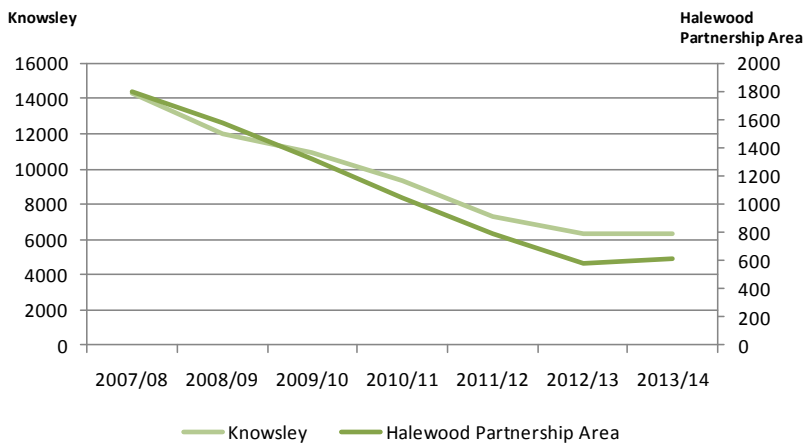
Community Safety



Trend: Although the Partnership Area has seen an overall 34% decrease in crime between 2008/09 & 2013/4, the levels have fluctuated between those dates.

Gap: This is in contrast to the Borough, which has seen a sustained 32.5% decrease in crime over the same period

Anti Social Behaviour



Trend: The Partnership Area has seen a sustained 68% decrease in Anti-Social Behaviour (ASB) between 2007/08 & 2012/13, although the 2013/14 level suggests a possible reversal of that trend.

Gap: This is broadly in line with the trend in the Borough, although the 2013/14 level suggests that ASB levels are also stabilising in the Borough