

# Huyton Partnership Area Dashboard

2014

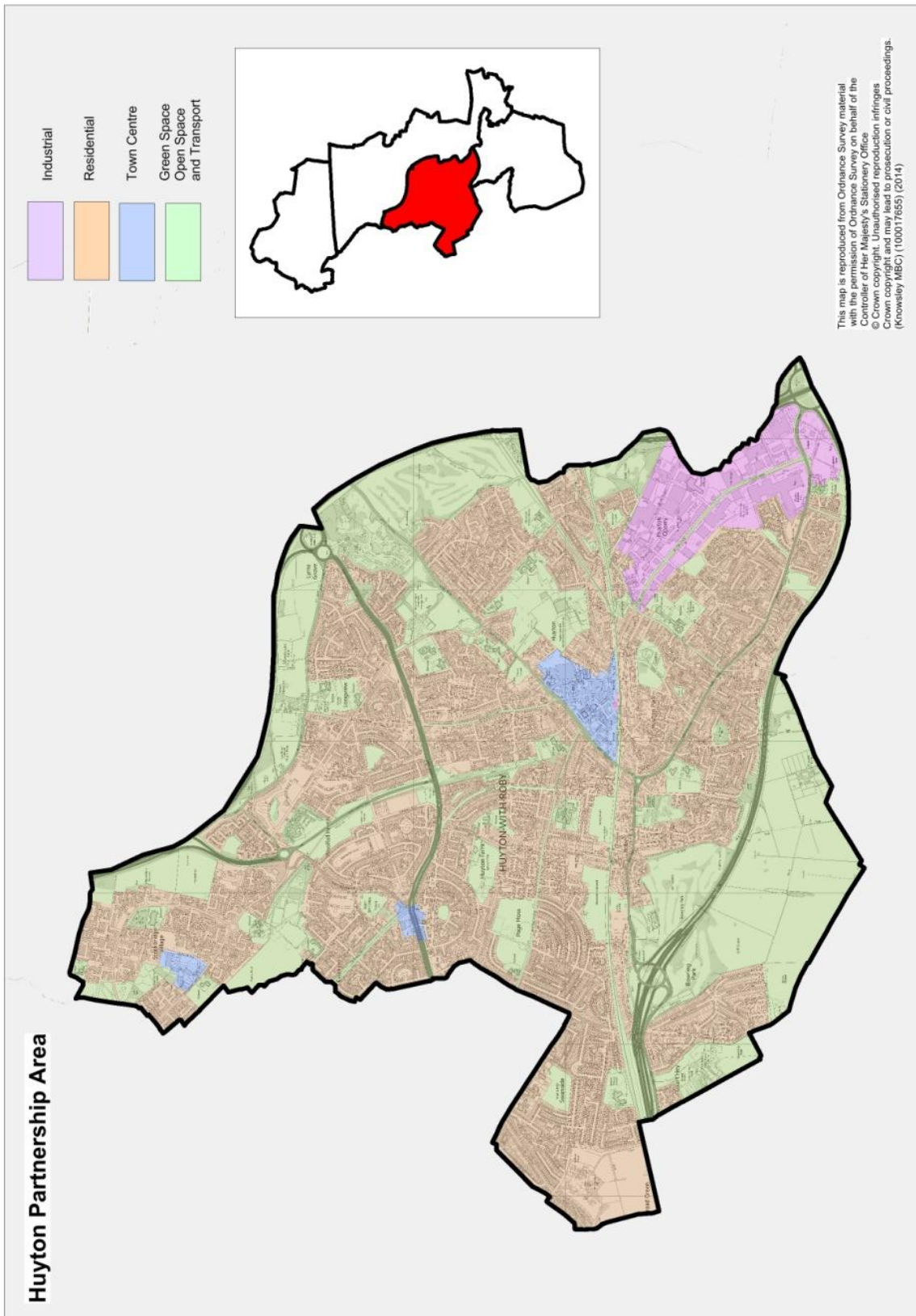
---

**This report has been produced by Policy Impact and Intelligence, Knowsley Council.**

Contact: [ian.burkinshaw@knowsley.gov.uk](mailto:ian.burkinshaw@knowsley.gov.uk) (0151 443 3067)

# Huyton Partnership Area

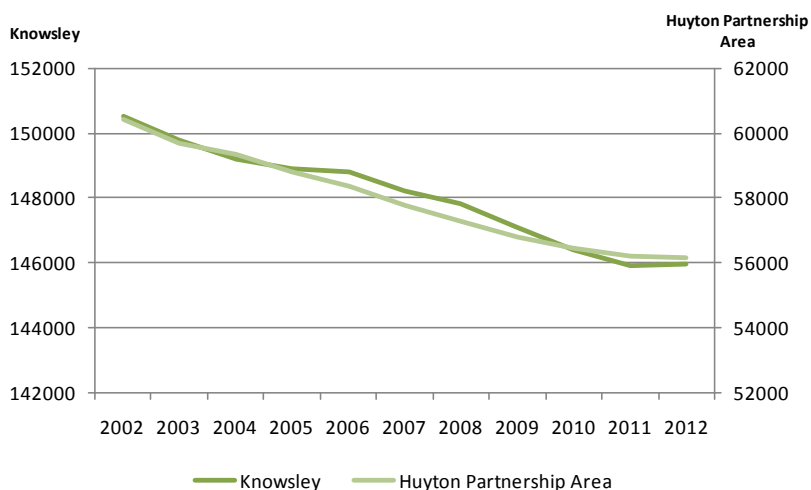
## Location Map



## Resident Population

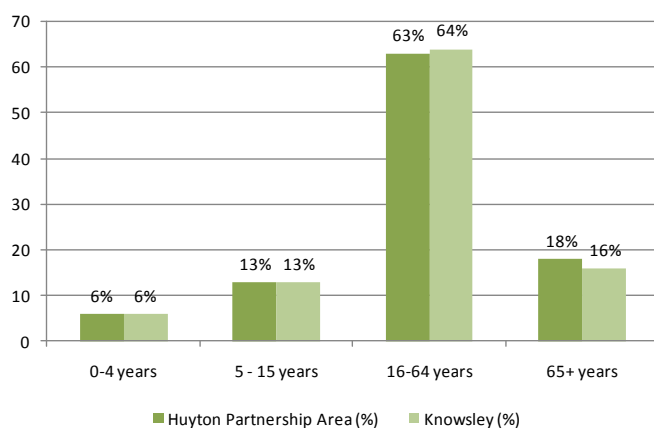
Latest available population figures at Ward level are the 2012 mid-year estimates.

The Partnership Area has a population of 56,135, living in approximately 25,808 households.



Between 2002 and 2012, the Partnership Area's population has decreased by 7.1% from 60,418 to 56,135. This is broadly in line with the trend in the Borough as a whole.

## Age of Residents



Compared with the Borough, the Ward has the same proportions of its population within the 0-4 and 5-15 age bands, with similar proportions of its population within the 16-64 and 65+ age bands.

Age Band	Huyton Partnership Area (No.)		% Change	Knowsley (No.)		% Change
	2012	2002		2012	2002	
0-4	3,402	3,538	-3.8	9,305	9,063	2.7
5 - 15	7,130	10,044	-29.0	19,178	24,427	-21.5
16-64	35,577	37,301	-4.6	93,781	94,383	-0.6
65+	10,026	9,535	5.1	23,672	22,633	4.6

The proportion of residents aged between 0-4, 5-15 and 16-64 has decreased since 2002, whereas the proportion of residents aged 65+ has increased. This is at variance with the Borough.

Note: Numbers in red indicate a reduction.

## Health of Residents

Life Expectancy	Huyton Partnership Area		Knowsley	
	2008 - 2012	2003 - 2007	2008 - 2012	2003 - 2007
Male Life Expectancy at Birth	76.9	76.1	76.6	75.7
Female Life Expectancy at Birth	81.0	79.6	80.7	78.6

Between 2003-07 and 2008-12, male and female life expectancy at birth in Huyton Partnership Area increased by 0.8 years and 0.4 years respectively and both are higher than that of the Borough.

Key Mortality Indicators (Mortality rate per 100,000)	Huyton Partnership Area		Knowsley	
	2010 - 2012	2007 - 2009	2010 - 2012	2007 - 2009
All Age Mortality Rate - All Cause	652.8	689.2	648.4	706.9
All Age Mortality Rate - Cardiovascular	159.6	193.7	159.3	159.3
All Age Mortality Rate - Cancer	207.1	207.0	206.5	216.4

Between 2007-09 & 2010-12, the All Cause and Cardiovascular mortality rates decreased, whereas the Cancer mortality rate has stabilised. This is at variance with the Borough, where the Cardiovascular mortality has stabilised and the Cancer mortality rate has decreased

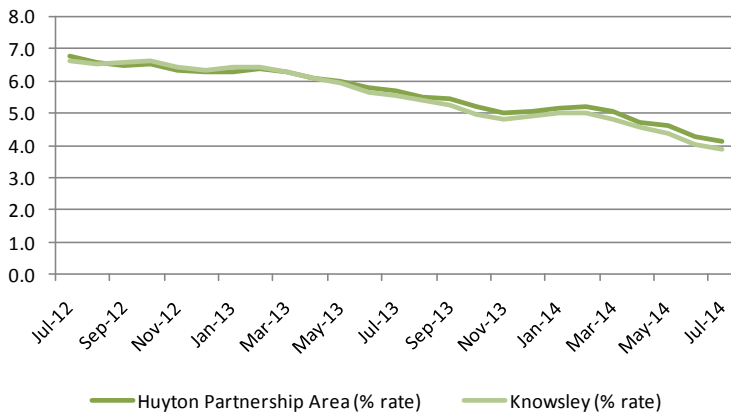
## Employment

All People	Huyton Partnership Area (%)	Knowsley (%)	England & Wales (%)
Economically active (of which):	64.3	65.6	69.7
In employment	54.3	56	61.9
Employees	48.5	50.2	52.2
Self employed	5.8	5.9	9.7
Unemployed	6.8	6.5	4.4

The Partnership Area has lower % proportions of Economically Active people (all categories) than the Borough, whereas the proportion of its Unemployed residents exceeds that of the Borough as a whole.

## Residents claiming Job Seekers Allowance

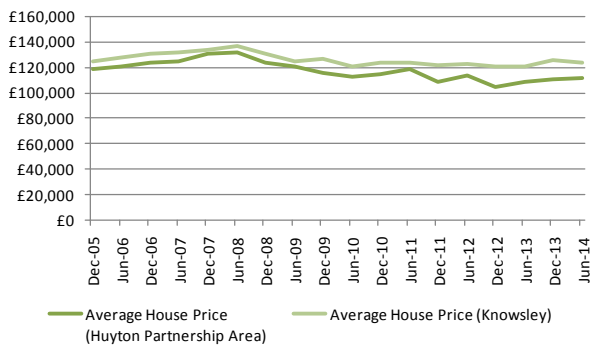
The Partnership Area has 1,477 JSA claimants within a working age population of 35,577. This equates to a claimant rate of 4.2%.



**Trend:** The Partnership Area saw a 2.6% point decrease in the proportion of its working age population claiming JSA, between July 2012 & July 2014. This is less than Knowsley, which saw a 2.8% point decrease over the same period.

**Gap:** There is currently a 0.2% gap between the Partnership Area's current JSA claimant rate and that of Knowsley's. Closing the gap would require the Partnership Area to have 89 fewer claimants.

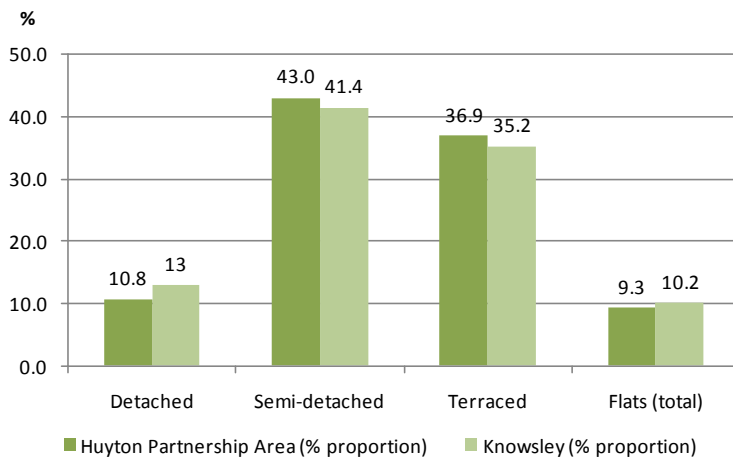
## House Prices



**Trend:** Since the end of the 3 year downturn in June 2012, the Ward has experienced a 1.2% increase in average house prices.

**Gap:** The Ward's current average house price is 9.4% lower than that of the Borough. This equates to a narrowing price differential of £11,615.

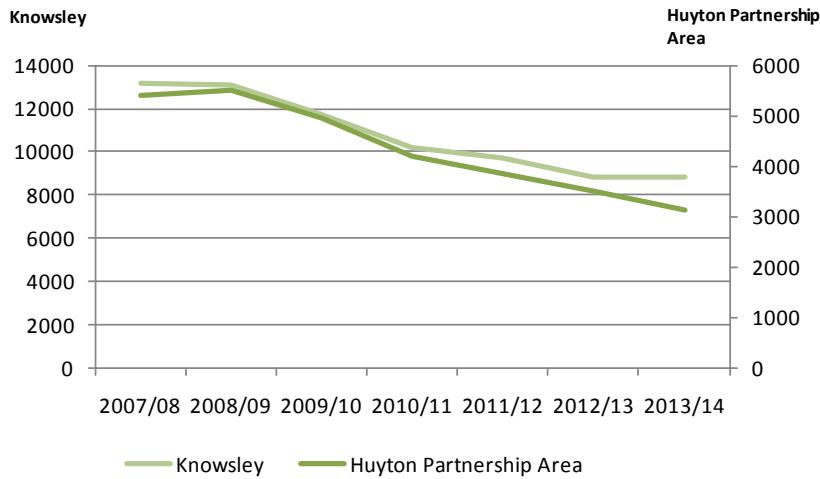
## House Types



The majority of the housing stock is semi-detached and terraced, followed by detached, with flats comprising 9.3%.

This is similar to Knowsley Borough, where the majority of housing stock is semi-detached, followed by terraced housing, with flats comprising 10%.

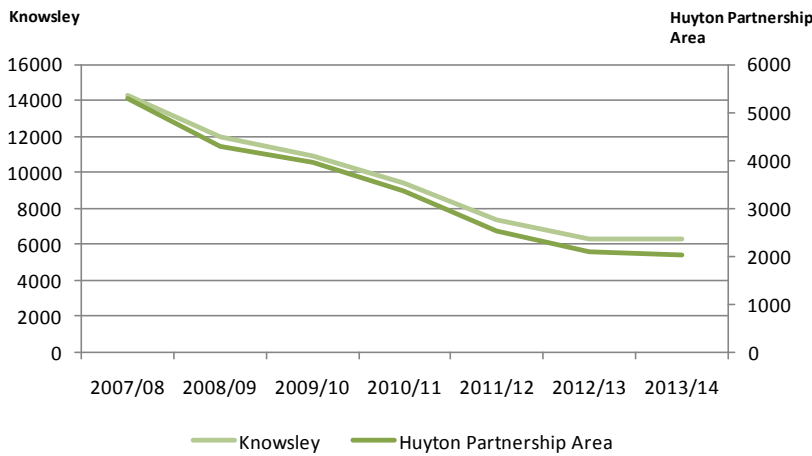
## Community Safety



**Trend:** Between 2008/09 and 2012/13, the Partnership Area has seen an overall 36.4% decrease in crime, although the 2013 figure suggests that the crime level is stabilising.

**Gap:** This is broadly in line with the trend in the Borough

## Anti Social Behaviour



**Trend:** The Partnership Area has seen a 60.4% decrease in Anti-Social Behaviour (ASB) between 2007/08 & 2012/13, although the 2013 level suggests a possible reversal of that trend.

**Gap:** This is broadly in line with the trend in the Borough.