

Kirkby Partnership Area Dashboard

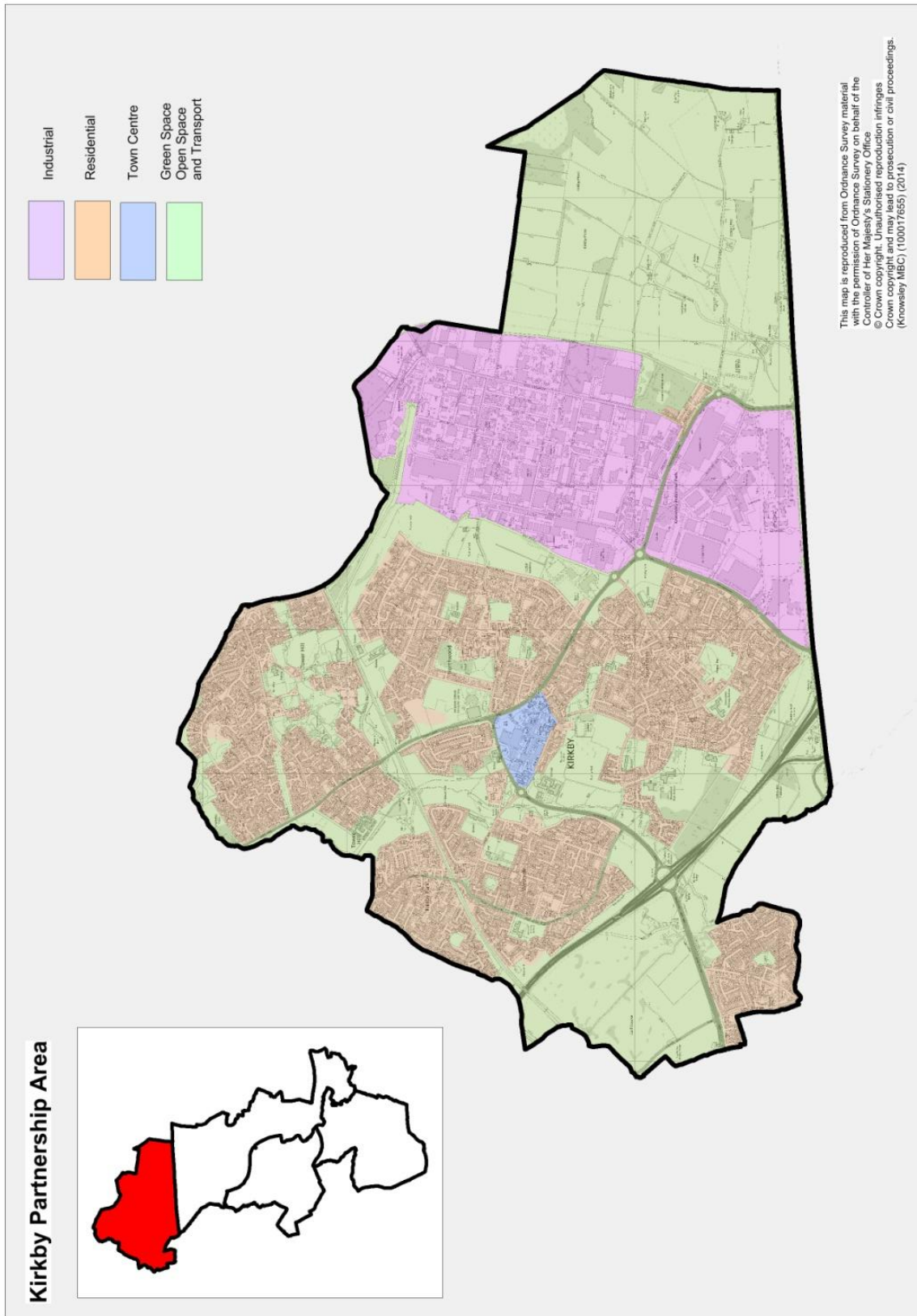
2014

This report has been produced by Policy Impact and Intelligence, Knowsley Council.

Contact: ian.burkinshaw@knowsley.gov.uk (0151 443 3067)

Kirkby Partnership Area

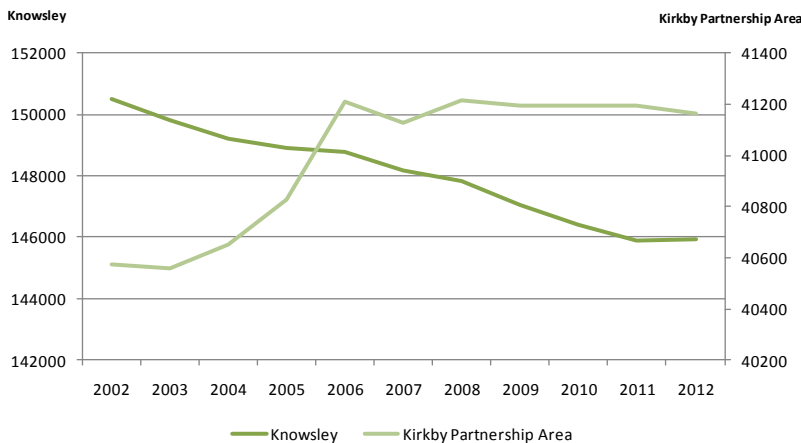
Location Map



Resident Population

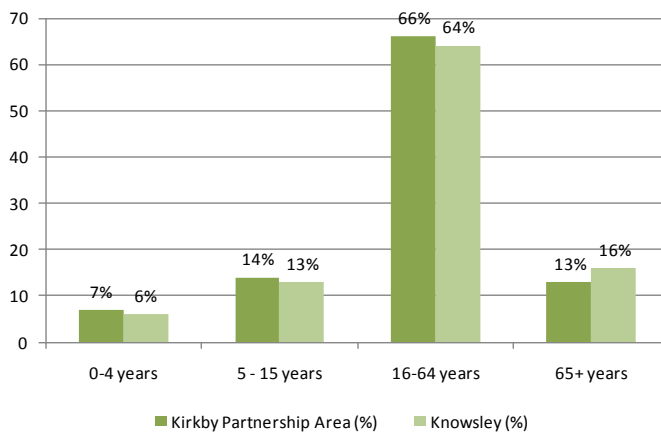
Latest available population figures at Ward level are the 2012 mid-year estimates.

The Partnership Area has a population of 41,163, living in approximately 18,711 households.



Between 2006 and 2012, the Partnership Board's population has remained stable at approximately 41,163. However prior to this, (between 2003 & 2006), the population had increased by 1.6%. This is contrast to the to the Borough, which has seen a sustained decrease in its population, since 2002

Age of Residents



Compared with the Borough, the Partnership Area has greater proportions of its population within the 0-4, 5-15 & 16-64 aged bands. However, its proportion of residents aged 65+ is 3% points less than the Borough.

Age Band	Kirkby Partnership Area (No.)		% Change	Knowsley (No.)		% Change
	2012	2002		2012	2002	
0-4	2,983	2,469	20.8	9,305	9,063	2.7
5 - 15	5,723	6,649	-13.9	19,178	24,427	-21.5
16-64	27,185	25,854	5.1	93,781	94,383	-0.6
65+	5,272	5,603	-5.9	23,672	22,633	4.6

The proportion of residents aged between 5-15 and 65+ has decreased since 2002, whereas the proportion of residents aged between 0-4 and q6-64 has increased. This is at variance with the Borough.

Note: Numbers in red indicate a reduction.

Health of Residents

Life Expectancy	Kirkby Partnership Area		Knowsley	
	2008 - 2012	2003 - 2007	2008 - 2012	2003 - 2007
Male Life Expectancy at Birth	76.3	74.1	76.6	75.7
Female Life Expectancy at Birth	79.6	77.7	80.7	78.6

Between 2003-07 and 2008-12, male and female life expectancy at birth in Kirkby Partnership Area increased by 2.2 years and 1.9 years respectively. Male life expectancy is lower than that of the Borough, whereas female life expectancy is higher than that of the Borough.

Key Mortality Indicators (Mortality rate per 100,000)	Kirkby Partnership Area		Knowsley	
	2010 - 2012	2007 - 2009	2010 - 2012	2007 - 2009
All Age Mortality Rate - All Cause	702.6	692.4	648.4	706.9
All Age Mortality Rate - Cardiovascular	165.1	196.6	159.3	159.3
All Age Mortality Rate - Cancer	242.0	245.7	206.5	216.4

Between 2007-09 & 2010-12, each mortality rates increased. This is at variance with the Borough, where the All Cause and Cancer mortality rates have decreased and the Cardiovascular mortality rate has stabilised

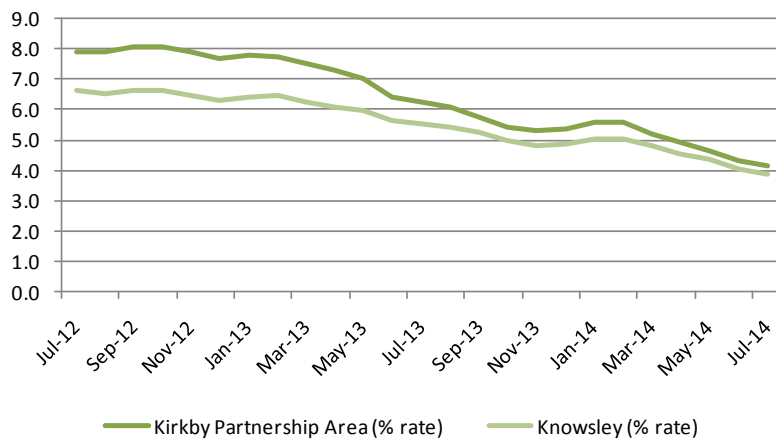
Note: Numbers in red indicate a reduction.

Employment

All People	Kirkby Partnership Area (%)	Knowsley (%)	England & Wales (%)
Economically active (of which):	65.1	65.6	69.7
In employment	54.8	56	61.9
Employees	49.6	50.2	52.2
Self employed	5.2	5.9	9.7
Unemployed	7.4	6.5	4.4

The Partnership Area has lower % proportions of Economically Active people (all categories) than the Borough. The proportion of its Unemployed residents exceeds that of the Borough as a whole.

Residents claiming Job Seekers Allowance

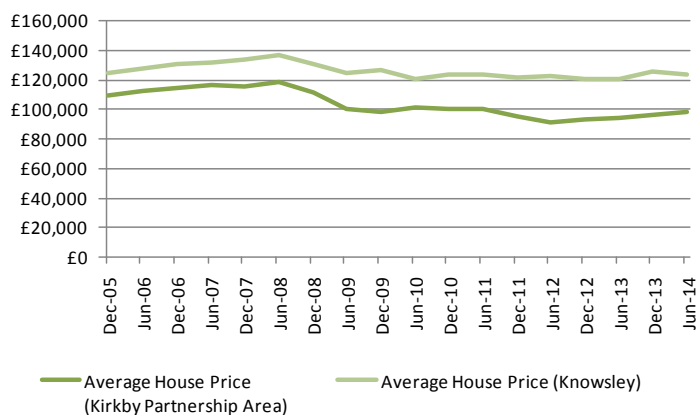


The Partnership Area has 1,173 JSA claimants within a working age population of 27,185. This equates to a claimant rate of 4.1%.

Trend: The ward saw a 3.9% point decrease in the proportion of its working age population claiming JSA, between Sept 2012 & July 2014. This is greater than Knowsley, which saw a 2.7% point decrease over the same period.

Gap: There is currently a 0.3% gap between the Ward's current JSA claimant rate and that of Knowsley's. Closing the gap would require the Partnership Area to have 68 fewer claimants.

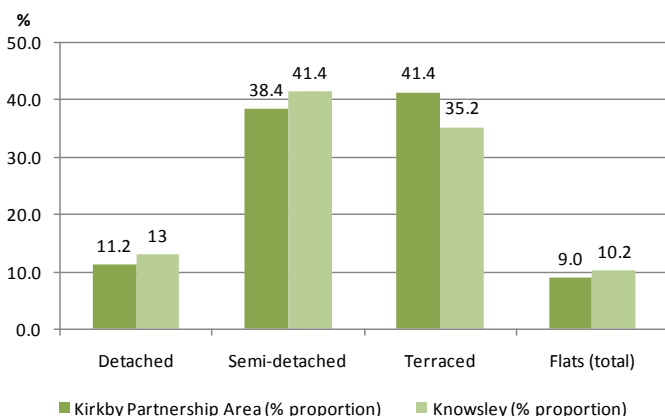
House Prices



Trend: Since the end of the 3 year downturn in June 2012, the Ward has experienced a 7.1% increase in average house prices.

Gap: The Partnership Area's current average house price is 20.5% lower than that of the Borough. This equates to a price differential of £25,307.

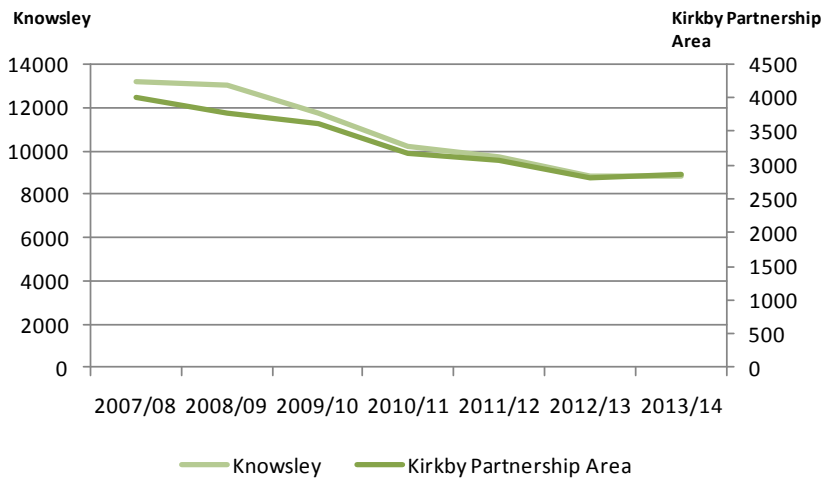
House Types



The majority of the housing stock is semi-detached and terraced, followed by detached, with flats comprising 9% of the housing stock

This is similar to Knowsley Borough, where the majority of housing stock is semi-detached, followed by terraced housing, with flats comprising 10%.

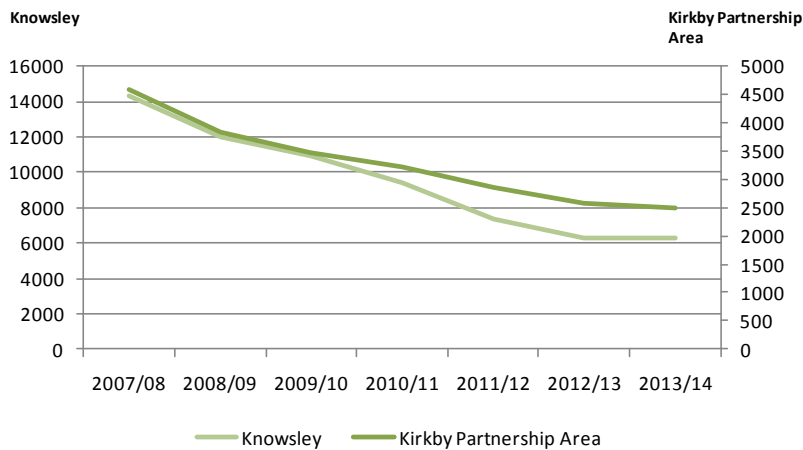
Community Safety



Trend: Between 2008/09 and 2012/13, the Partnership Area has seen an overall 25.5% decrease in crime, although the 2013 figure suggests that the crime level is stabilising.

Gap: This is broadly in line with the trend in the Borough

Anti Social Behaviour



Trend: The Partnership Area has seen a 44.1% decrease in Anti-Social Behaviour (ASB) between 2007/08 & 2012/13, although the 2013/14 level suggests a possible reversal of that trend.

Gap: This is broadly in line with the trend in the Borough.