

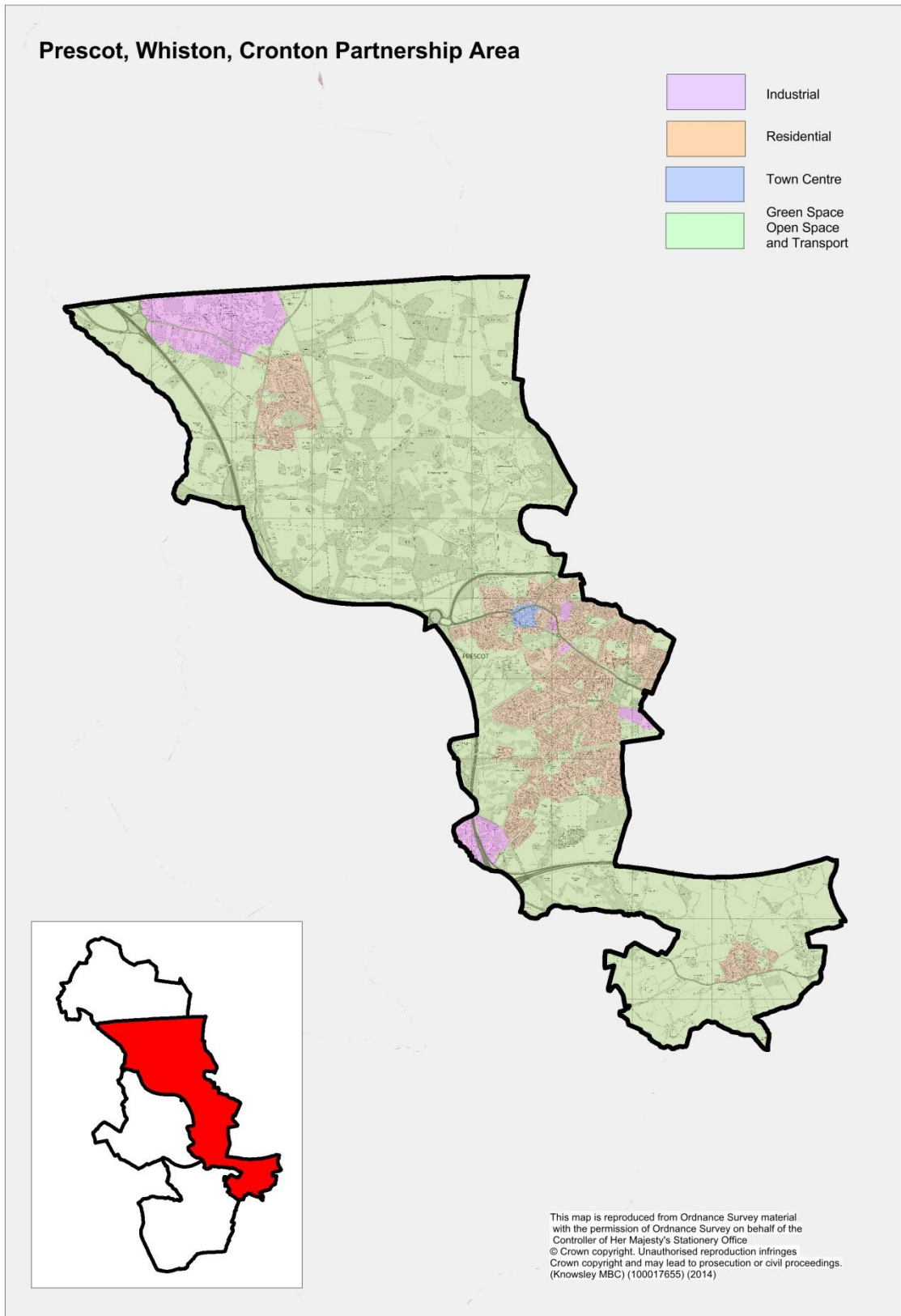
Prescot, Whiston & Cronton Village Partnership Area Dashboard

2014

This report has been produced by Policy Impact and Intelligence, Knowsley Council.

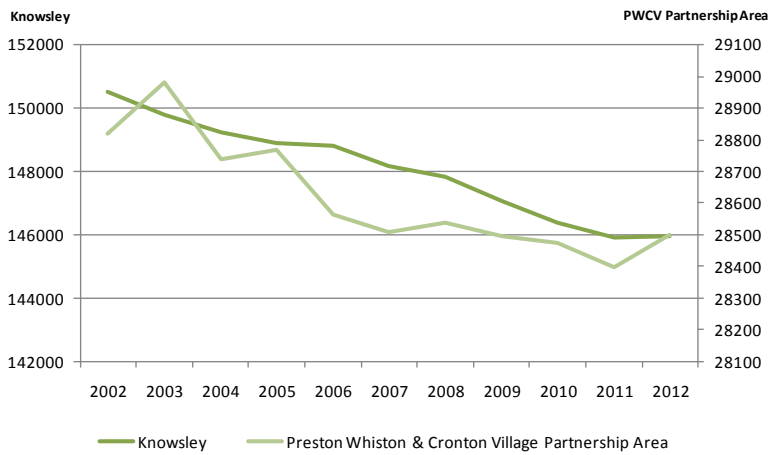
Contact: ian.burkinshaw@knowsley.gov.uk (0151 443 3067)

Location Map



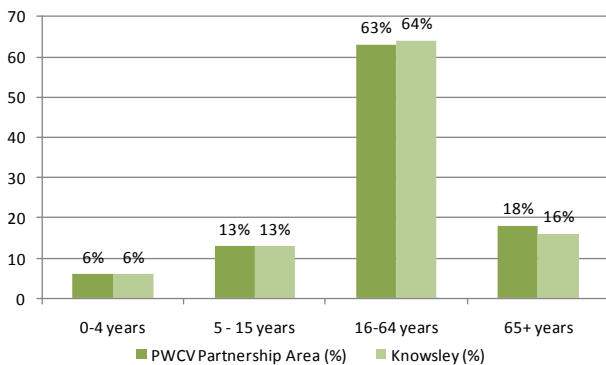
Resident Population

Latest available population figures at Ward level are the 2012 mid-year estimates. The Partnership Area has a population of 28,499 living in approximately 13,164 households.



Between 2003 and 2011, the Partnership Area's population has decreased by an overall 2%, from 28,983 to 28,399. This is broadly in line with the trend in the Borough as a whole. However the 2012 figure suggests that the populations in both Partnership Area and Borough are stabilising.

Prescot Whiston and Cronton Village (PCWV) Population by Age Band compared to Knowsley as a whole



Compared with the Borough, the Partnership Area has similar proportions of its population within each of its age bands

Age Band	PWCV Partnership Area (No.)		% Change	Knowsley (No.)		% Change
	2012	2002		2012	2002	
0-4	1,738	1,746	-0.5	9,305	9,063	2.7
5 - 15	3,667	4,355	-15.8	19,178	24,427	-21.5
16-64	17,845	18,135	-1.6	93,781	94,383	-0.6
65+	5,249	4,582	14.6	23,672	22,633	4.6

The proportion of residents aged between 0-4, 5-15 and 16-64 has decreased since 2002, whereas the proportion of residents aged 65+ has increased. This is at variance with the Borough, where the proportion of residents aged 0-4 has increased.

Health of Residents

Life Expectancy	PCWV Partnership Area		Knowsley	
	2008 - 2012	2003 - 2007	2008 - 2012	2003 - 2007
Male Life Expectancy at Birth	77.8	78.2	76.6	75.7
Female Life Expectancy at Birth	82.2	81.4	80.7	78.6

Between 2003-07 and 2008-12, male life expectancy at birth in PCWV Partnership Area decreased by 0.4 years, whilst female life expectancy increased by 0.8 years.

Key Mortality Indicators (Mortality rate per 100,000)	PWCV Partnership Area		Knowsley	
	2010 - 2012	2007 -2009	2010 - 2012	2007 -2009
All Age Mortality Rate - All Cause	555.1	640.2	648.4	706.9
All Age Mortality Rate - Cardiovascular	145.5	186.2	159.3	159.3
All Age Mortality Rate - Cancer	175.4	209.0	206.5	216.4

Between 2007-09 & 2010-12, each mortality rate has decreased. This is at variance with the Borough, where the Cardiovascular mortality has stabilised.

Note: Numbers in red indicate a reduction.

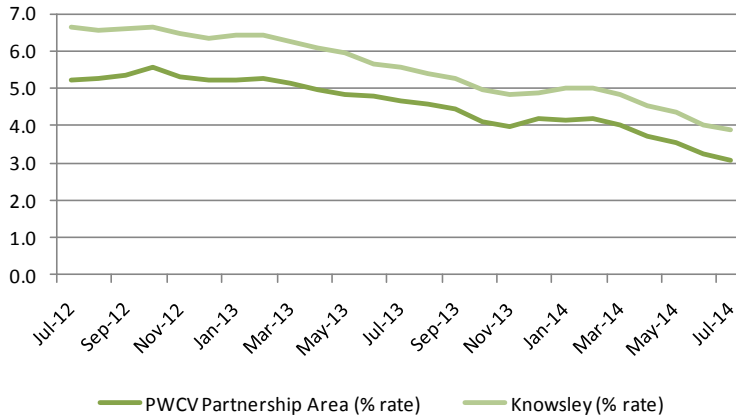
Employment

All People	PCWV Partnership Area (%)	Knowsley (%)	England & Wales (%)
Economically active (of which):	65.3	65.6	69.7
In employment	57.3	56	61.9
Employees	51	50.2	52.2
Self employed	6.3	5.9	9.7
Unemployed	5.3	6.5	4.4

Although the Partnership Area has a similar proportion of overall Economically Active people to the Borough, the proportions of those In Employment, Employees and Self-Employed are higher than those of the Borough – whereas the proportions its Unemployed residents is lower than the Borough as a whole.

Residents claiming Job Seekers Allowance

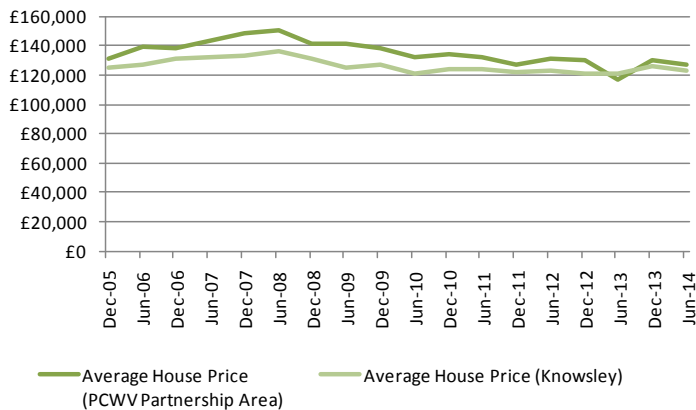
The Partnership Area has 549 JSA claimants within a working age population of 17,845. This equates to a claimant rate of 3.1%.



Trend: The ward saw a 2.5% point decrease in the proportion of its working age population claiming JSA, between Sept 2012 & July 2014. This is greater than Knowsley, which saw a 2.7% point decrease over the same period.

Gap: There is currently a 0.8% gap between the Ward's current JSA claimant rate and that of Knowsley's. Closing the gap would require the Borough to have 147 fewer claimants.

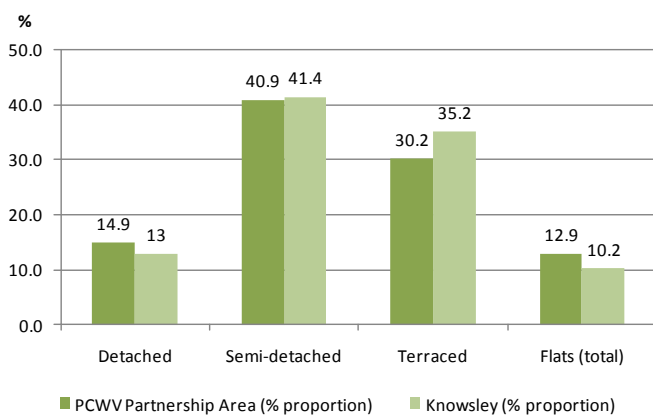
House Prices



Trend: Since the end of the 3 year downturn in June 2012, the Partnership Area has seen a 3.2% decrease in average house prices.

Gap: The Partnership Area's current average house price is 3.1% higher than that of the Borough. This equates to a price differential of £3,807.

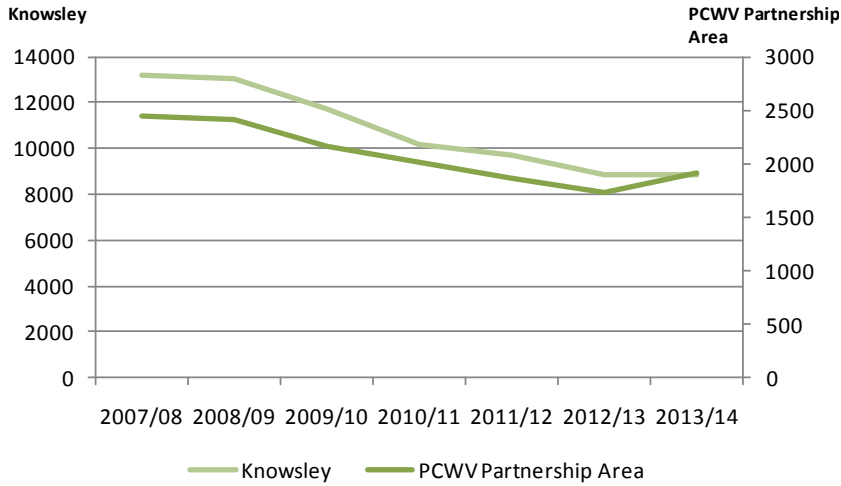
House Types



The majority of the housing stock is semi-detached, followed by terraced housing, with flats comprising 12.9% of the housing stock

This is in contrast to Knowsley Borough, where the majority of housing stock is semi-detached, followed by terraced housing, with flats comprising 10%.

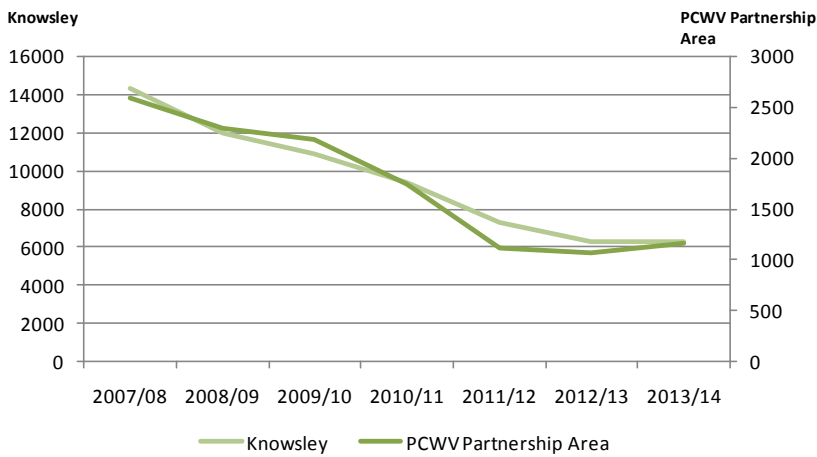
Community Safety



Trend: Between 2007/08 and 2012/13, the Partnership Area has seen an overall 29.5% decrease in crime, although the 2013/14 figure suggests that the crime level is stabilising.

Gap: This is broadly in line with the trend in the Borough

Anti Social Behaviour



Trend: Between 2007/08 and 2012/13, the Partnership Area has seen an overall 58.5% decrease in crime, although the 2013/14 figure suggests that the crime level is stabilising.

Gap: This is broadly in line with the trend in the Borough.